

FEDERAL SUPPLY CLASS
5975

**REV.
B**

AS25064™

RATIONALE

THIS DOCUMENT HAS BEEN DECLARED "STABILIZED" BY THE SAE AE-8A ELECTRICAL WIRING AND FIBER OPTIC INTERCONNECT SYSTEM INSTALLATION COMMITTEE AND WILL NO LONGER BE SUBJECTED TO PERIODIC REVIEWS FOR CURRENCY. THE CONDUIT IS A WELL-ESTABLISHED TECHNOLOGY WITH NO PROCUREMENT SPECIFICATION. REFER TO AS50881 FOR APPLICATIONS.

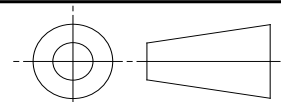
STABILIZED NOTICE

THIS DOCUMENT HAS BEEN DECLARED "STABILIZED" BY THE SAE AE-8A ELECTRICAL WIRING AND FIBER OPTIC INTERCONNECT SYSTEM INSTALLATION COMMITTEE AND WILL NO LONGER BE SUBJECTED TO PERIODIC REVIEWS FOR CURRENCY. USERS ARE RESPONSIBLE FOR VERIFYING REFERENCES AND CONTINUED SUITABILITY OF TECHNICAL REQUIREMENTS. NEWER TECHNOLOGY MAY EXIST.

SAE Executive Standards Committee Rules provide that: " This report is published by SAE to advance the state of technical and engineering sciences. The use of this report is entirely voluntary, and its applicability and suitability for any particular use, including any patent infringement arising therefrom, is the sole responsibility of the user." SAE reviews each technical report at least every five years at which time it may be revised, reaffirmed, stabilized, or cancelled. SAE invites your written comments and suggestions.

For more information on this standard, visit
<https://www.sae.org/standards/content/AS25064B/>

THIRD ANGLE PROJECTION



CUSTODIAN: AE-8A

PROCUREMENT SPECIFICATION: NONE



AEROSPACE STANDARD

CONDUIT, FLEXIBLE,
RADIO FREQUENCY
SHIELDING

AS25064™

**REV.
B**

ISSUED 1999-07 REVISED 2009-11 REAFFIRMED 2016-11 STABILIZED 2022-01

NOTICE

AS25064 PROVIDES PERFORMANCE REQUIREMENTS FOR AS25067 ASSEMBLIES, REQUIRES NO QUALIFICATION, AND HAS NO PROCUREMENT SPECIFICATION

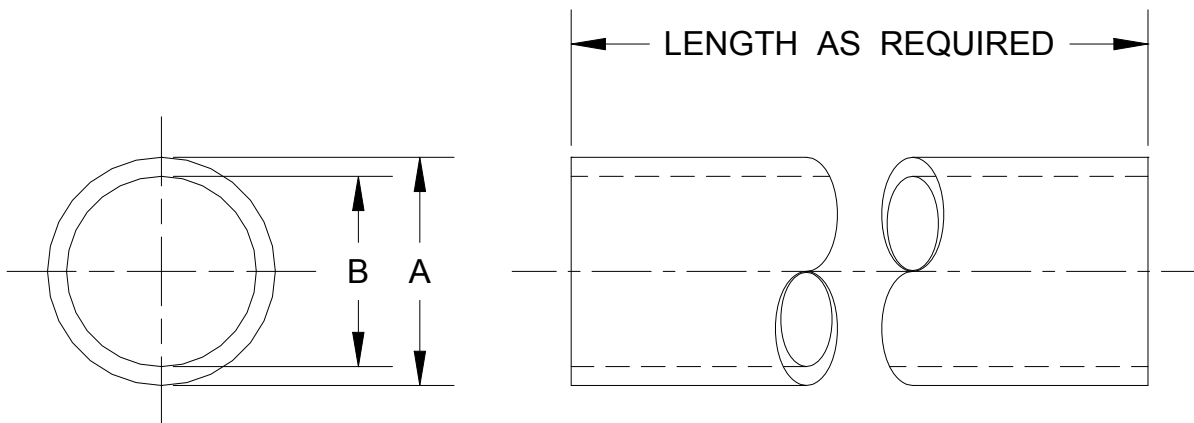


FIGURE 1 – CONDUIT, FLEXIBLE, RADIO FREQUENCY SHIELDING

TABLE 1 – AS25064 CONDUIT CONFIGURATION

MS PART NO.	INSIDE DIA (NOMINAL)	A		B		BENDING RADIUS (INSIDE) MAX	WEIGHT MAX LB PER FT
		MAX	MIN	MAX	MIN		
MS25064-3	3/16	.373	.350	.188	.172	1.625	.140
MS25064-4	1/4	.435	.401	.250	.235	2.000	.180
MS25064-5	5/16	.513	.490	.328	.313	2.000	.205
MS25064-8	3/8	.560	.538	.375	.360	2.125	.242
MS25064-10	5/8	.833	.810	.625	.610	2.500	.406
MS25064-12	3/4	.958	.935	.750	.745	3.000	.457
MS25064-16	1	1.256	1.236	1.000	.985	3.875	.710
MS25064-18	1-1/8	1.411	1.387	1.156	1.141	5.125	.820
MS25064-22	1-3/8	1.688	1.658	1.375	1.360	5.625	.950